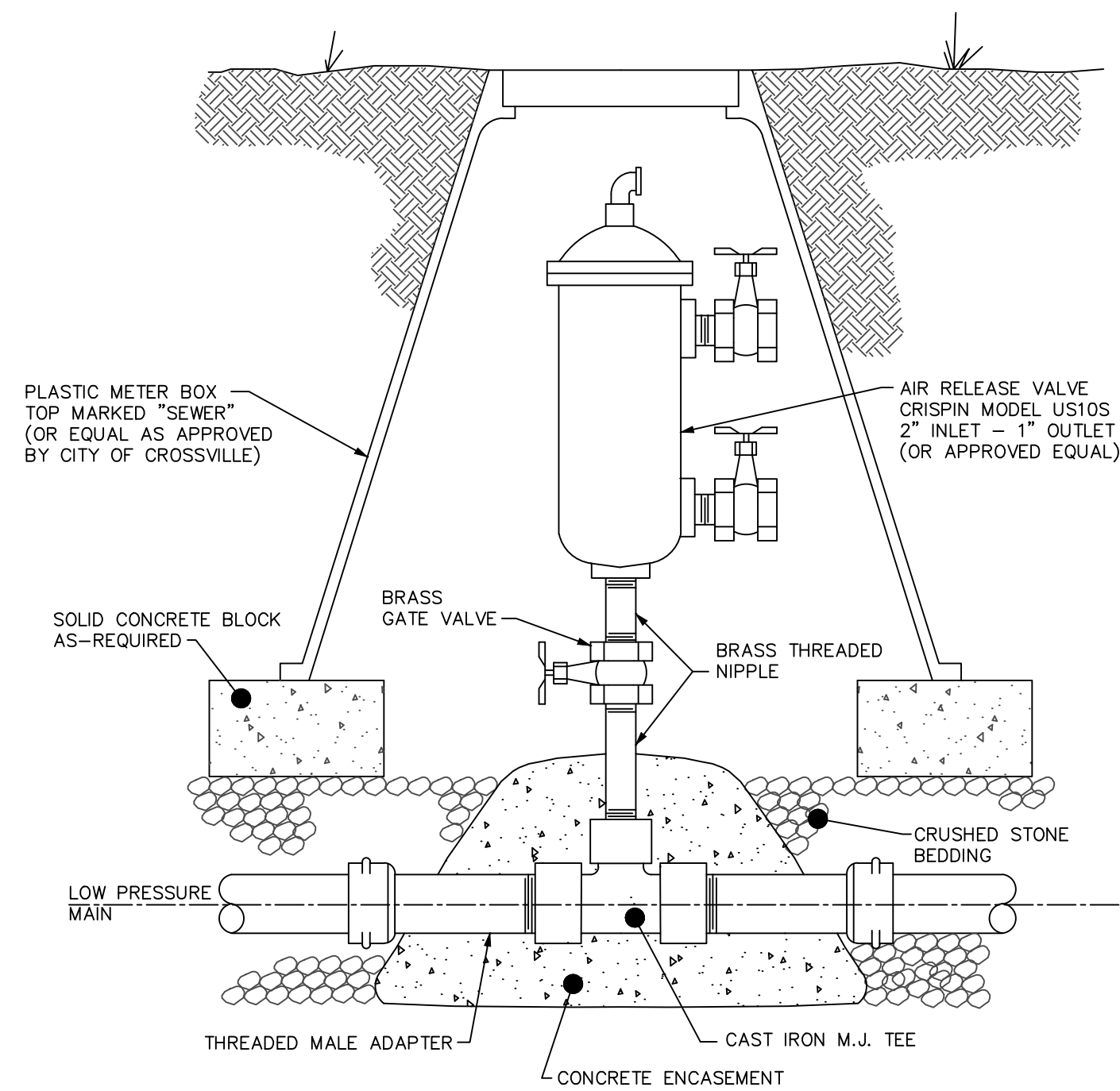
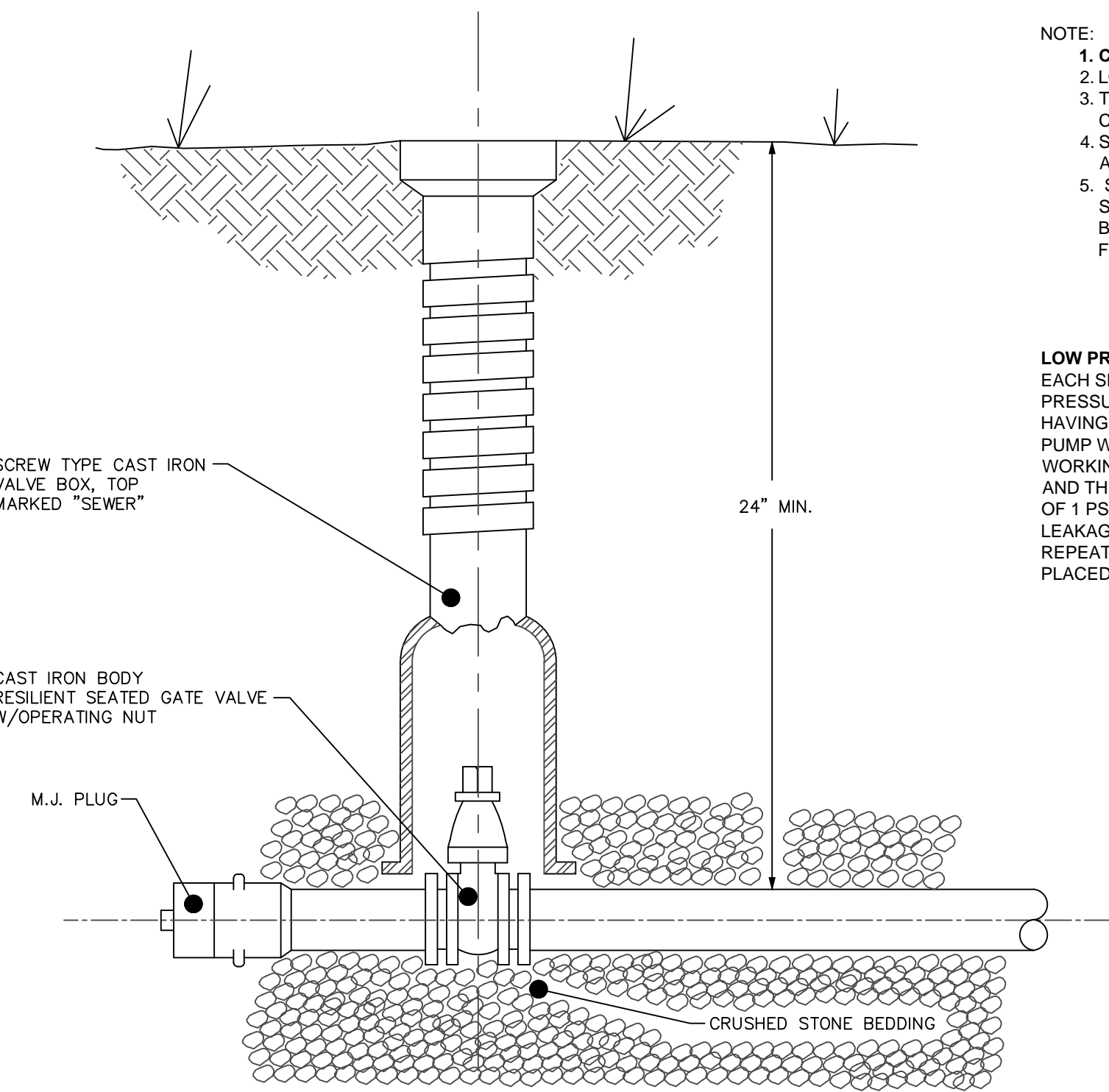


TYPICAL JUNCTION CONNECTION
NO SCALE



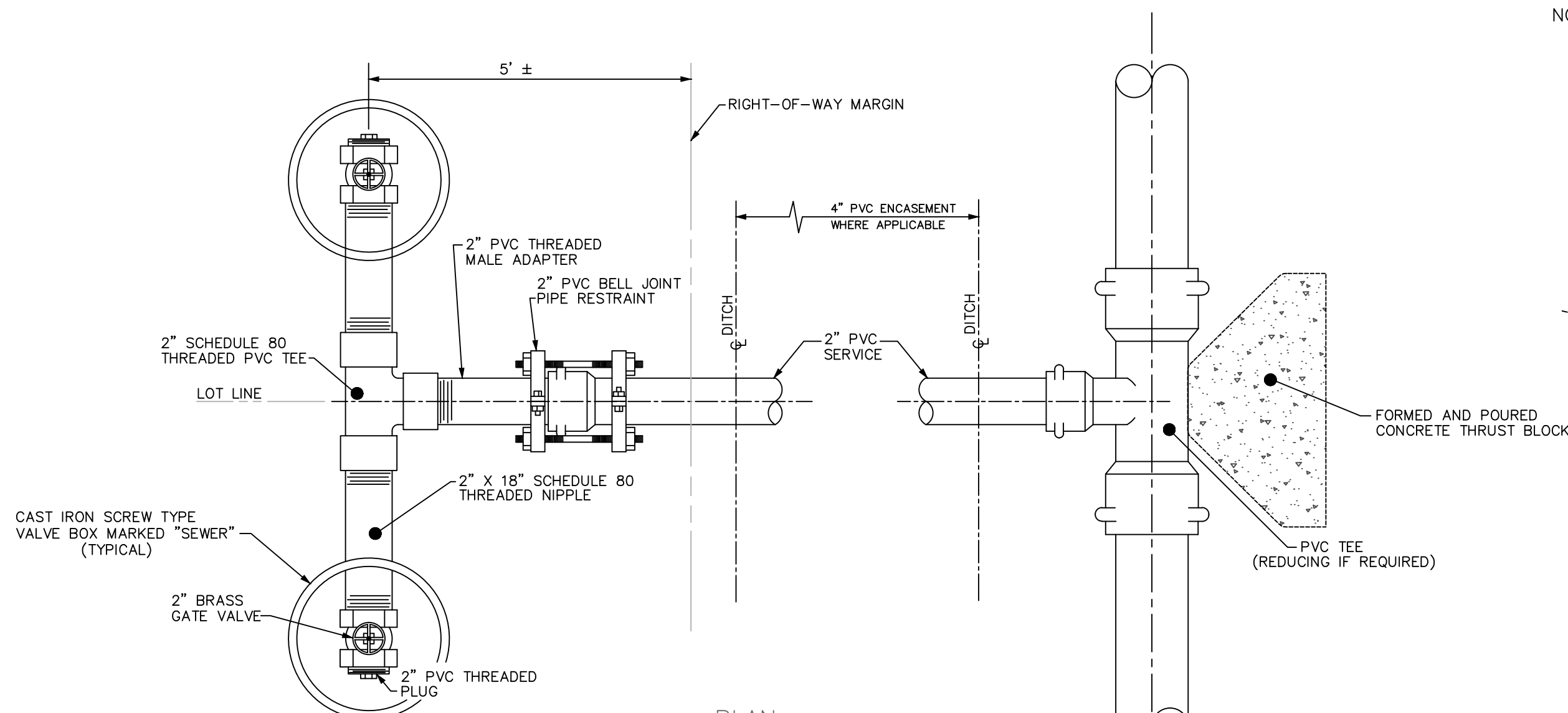
AUTOMATIC AIR RELEASE VALVE
NO SCALE



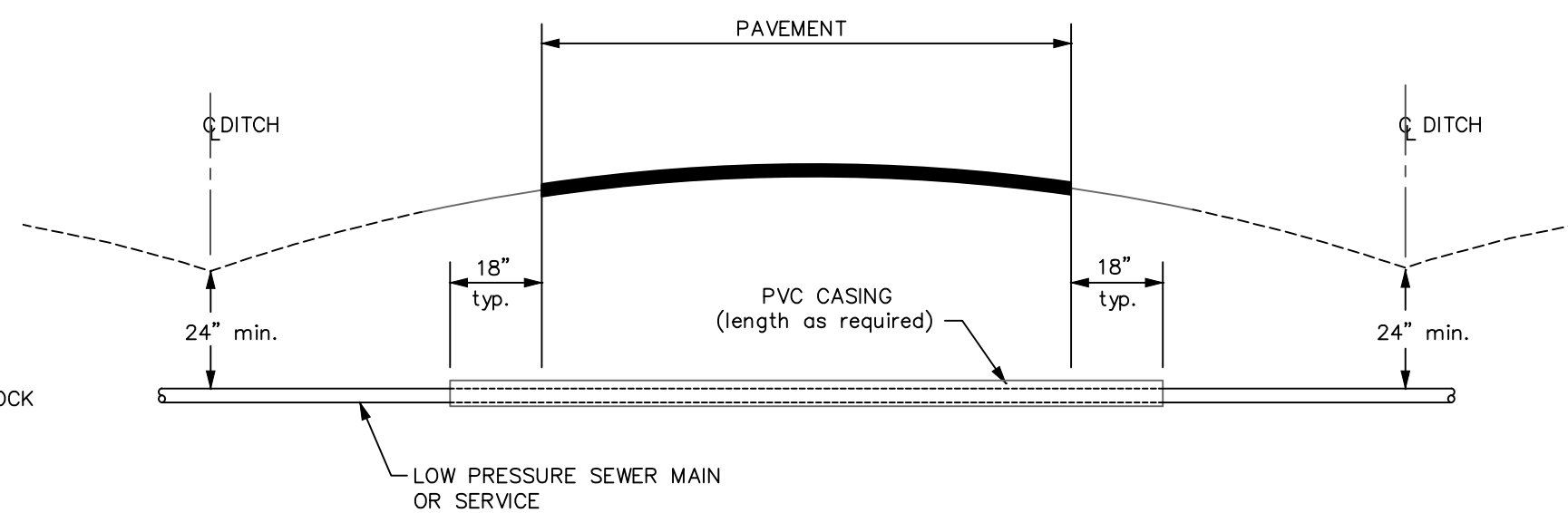
TYPICAL TERMINAL VALVE
NOT TO SCALE

- NOTE:
1. CLASS 200 PSI PIPE SHALL BE USED UNLESS SPECIFIED OTHERWISE.
 2. LOCATOR WIRE SHALL BE PLACED IN CASING WITH CARRIER PIPE.
 3. TRENCHES SHALL BE OPENED SUFFICIENTLY TO ALLOW INSTALLATION AND REMOVAL OF CARRIER PIPE IN MANUFACTURED LENGTHS FROM BOTH ENDS OF CASING PIPE.
 4. SPACERS SHALL BE USED IN ALL CASINGS. SPACERS SHALL BE A MAXIMUM OF 7 FEET APART WITH A MINIMUM 2 INCH SPACE BETWEEN THE CASING AND THE CARRIER PIPE.
 5. STEEL CASING SHALL BE USED IN ALL ROAD OR PAVED DRIVEWAY CROSSINGS UNLESS SPECIFIED OTHERWISE. STEEL CASING SHALL HAVE A MINIMUM CLEARANCE OF 2 INCHES BETWEEN CASING AND CARRIER PIPE. SPACERS SHALL BE INSTALLED NO MORE THAN 18" FROM EITHER END OF CASING.

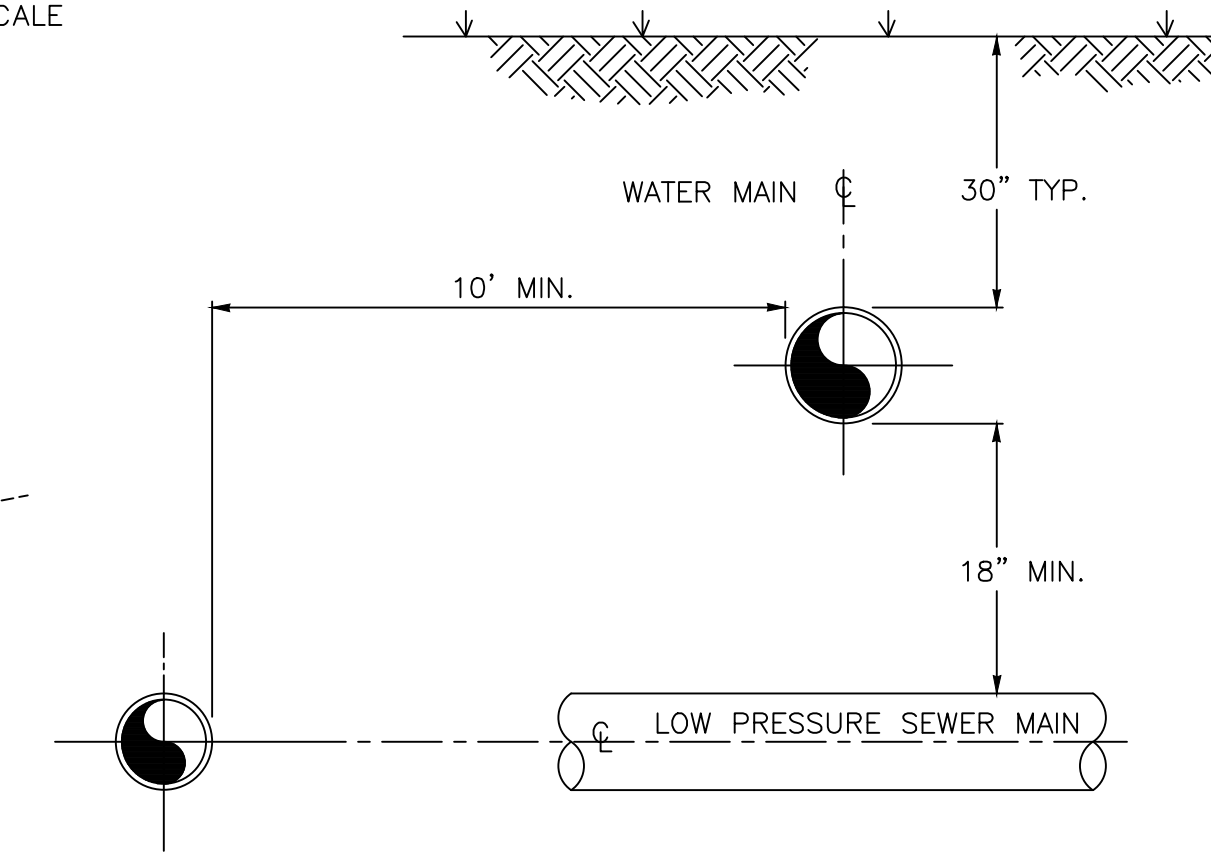
LOW PRESSURE SEWER PRESSURE TEST A EACH SECTION OF THE COMPLETED SEWER MAIN EXTENSIONS SHALL BE SUBJECTED TO A PRESSURE TEST. THE SECTION TO BE TESTED SHALL BE VALVED OFF BY GATE VALVES. AFTER HAVING BEEN FILLED WITH WATER, AND A POSITIVE DISPLACEMENT TEST PUMP SHALL BE USED TO PUMP WATER INTO THE SECTION TO BUILD UP A TEST PRESSURE OF THE GREATER OF 2 TIMES THE WORKING PRESSURE OR 100 PSI. THE TEST PUMP SHALL THEN BE VALVED OFF FROM THE SYSTEM AND THE PRESSURE SHALL BE OBSERVED OVER A PERIOD OF TWO HOURS. A DROP IN PRESSURE OF 1 PSI OR MORE DURING THE TWO HOUR TEST PERIOD SHALL BE TAKEN AS AN INDICATION OF LEAKAGE. IN THE EVENT LEAKS ARE FOUND AND CORRECTED, THE PRESSURE TEST SHALL BE REPEATED USING THE SAME PROCEDURE AS DESCRIBED. A LINE FAILING THIS TEST WILL NOT BE PLACED IN SERVICE OR ACCEPTED BY THE CITY OF CROSSVILLE.



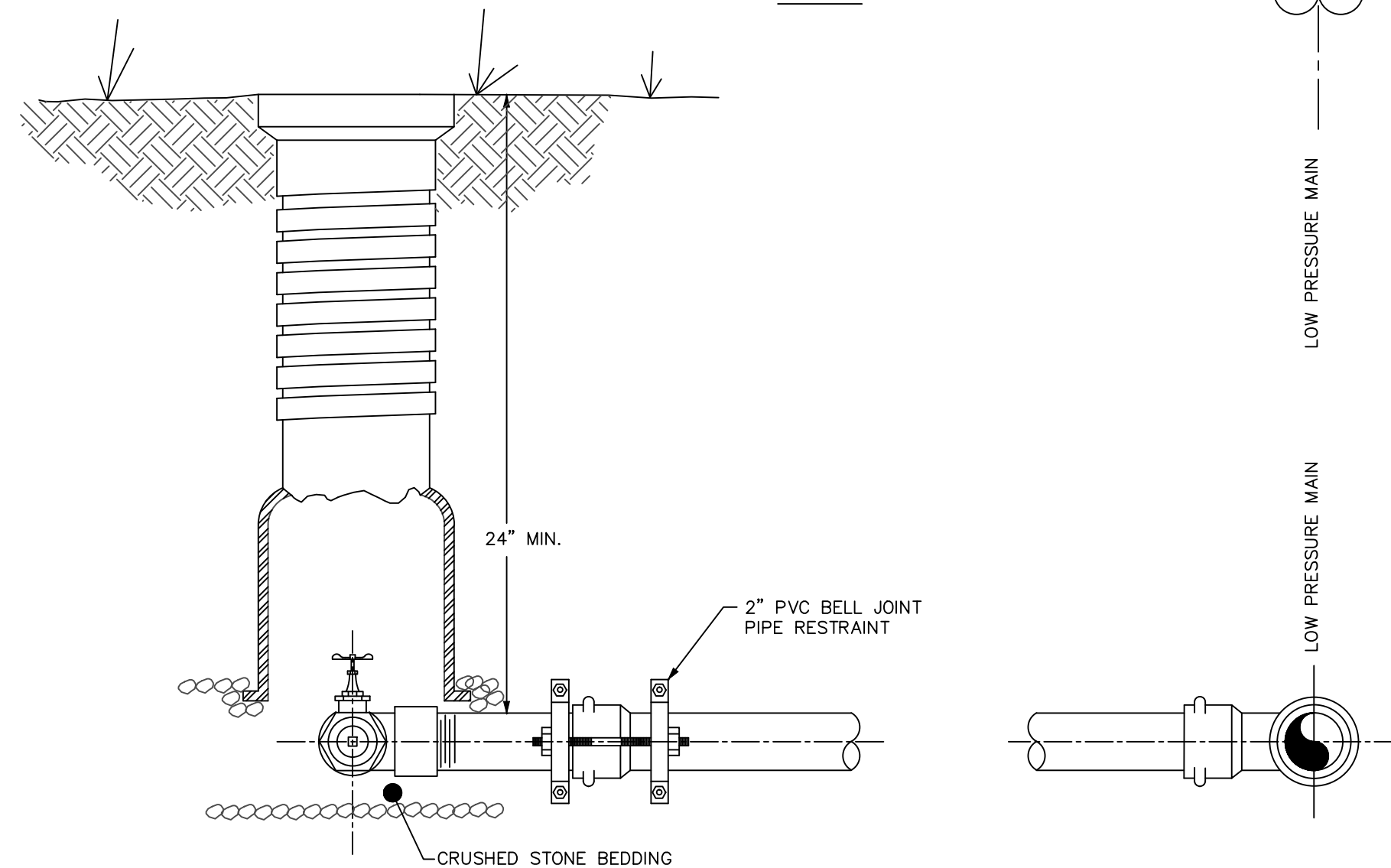
PLAN



TYPICAL CITY - COUNTY ROAD CROSSING
NOTE: STATE ROAD CROSSINGS SHALL BE BORED AND STEEL CASED



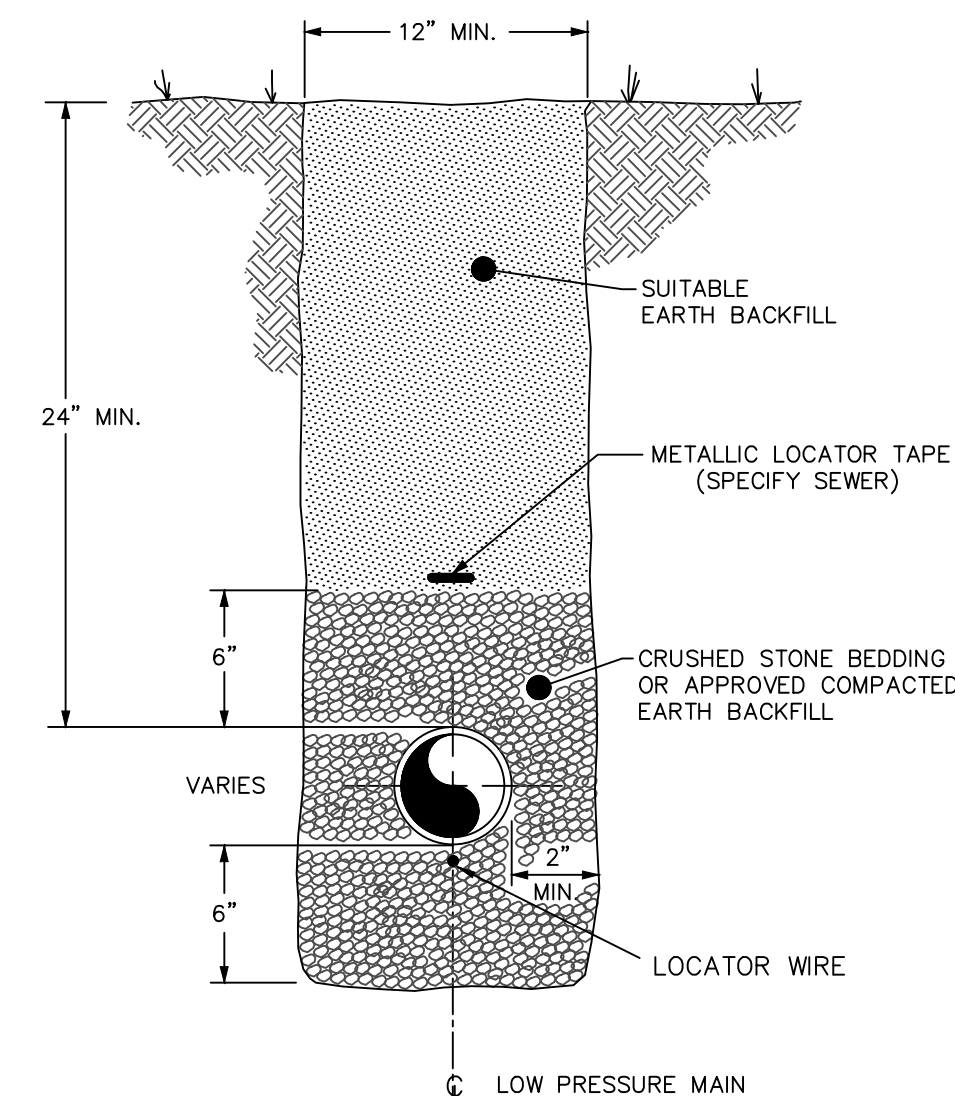
SEPARATION OF PIPED UTILITIES
NO SCALE



SECTION

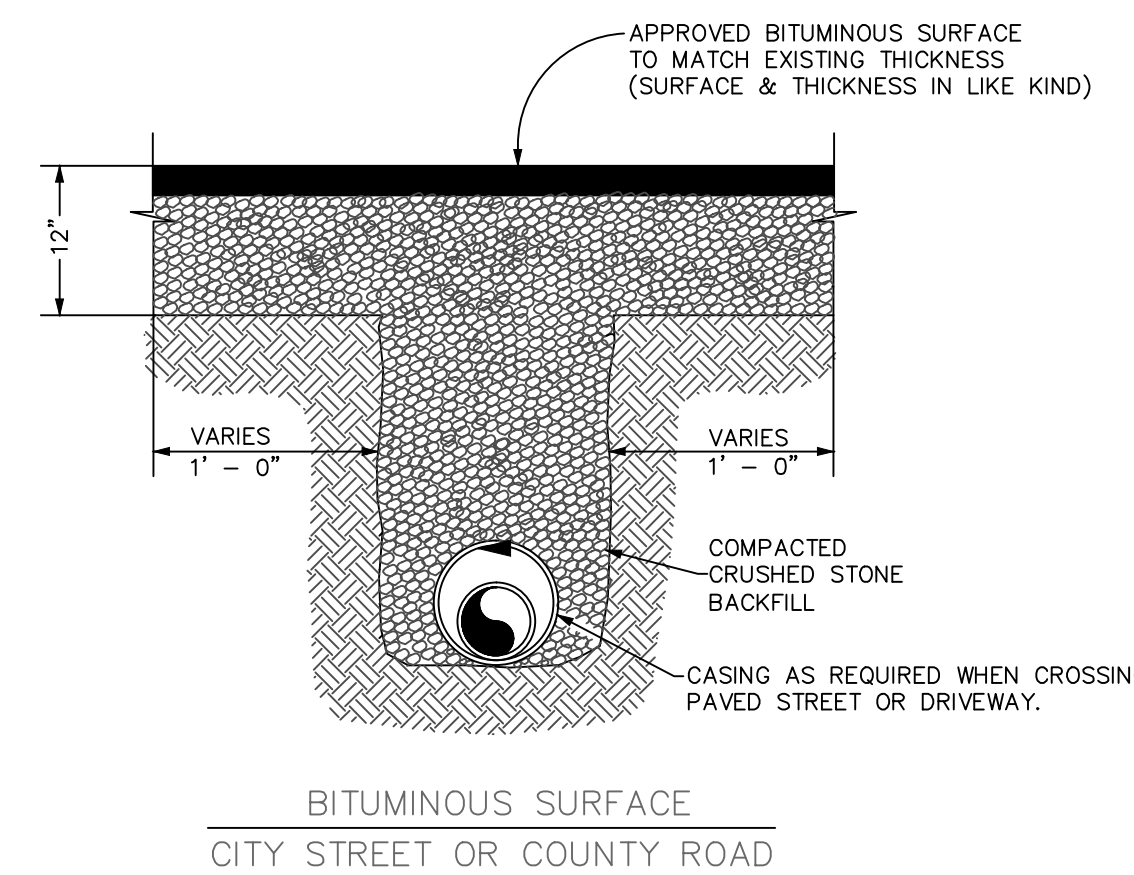
TYPICAL SERVICE LINE CONNECTION

- NOTE: 1. DOUBLE LOT CONNECTION SHOWN. FOR SINGLE SERVICE CONNECTION ELIMINATE TEE AND PROVIDE ONE GATE VALVE, PLUG AND VALVE BOX. 2. ALL SERVICES EXTENDING UNDER ROADWAYS SHALL BE ENCASED.

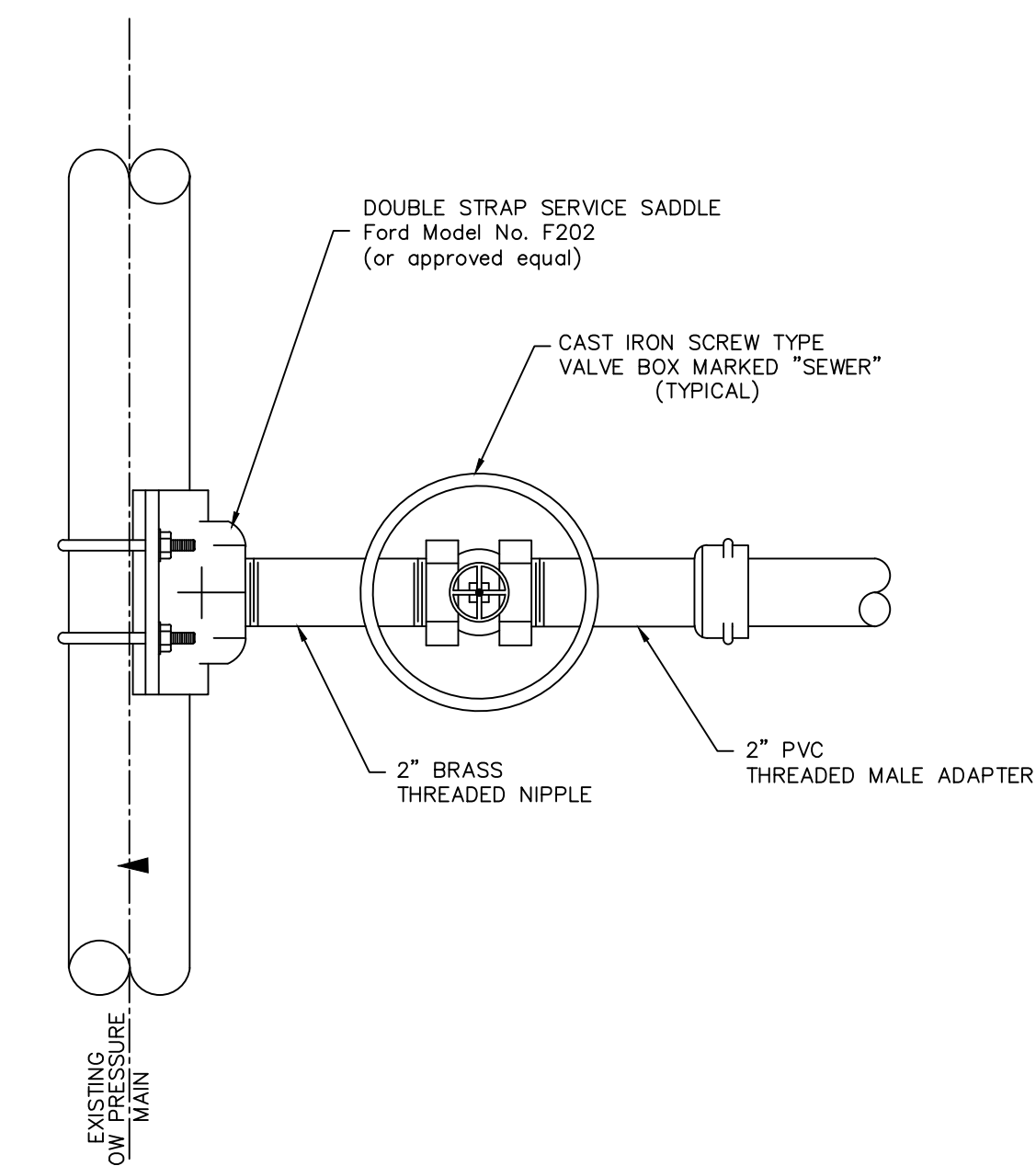


TYPICAL BEDDING DETAIL

- NOTE: METALLIC LOCATOR TAPE (SEWER) TO BE INSTALLED IN TRENCH 6" - 8" ABOVE SEWER LINE.



PAVEMENT REPLACEMENT BACKFILL
STATE ROAD CROSSINGS ARE TO BE BORED & CASED



SERVICE CONNECTION TO EXISTING MAIN
NO SCALE

CITY OF CROSSVILLE
ENGINEERING DEPARTMENT
392 N MAIN STREET
CROSSVILLE, TN 38655
PHONE: (931) 484-5113
FAX: (931) 484-7713

LOW PRESSURE SANITARY SEWER LINE DETAILS

NO.	DATE	REVISION DESCRIPTION
1	7/14/08	ADDED NOTES 1-5
2	3/07/16	ADDED NOTES FOR PRESSURE TESTS

FILE NAME: CROSSVILLE TYP
DETAILS2.DWG
DRAWN BY:
CHECKED BY: GD
DATE: 7/26/99
PROJECT NO.:

SHEET NO.
1 OF 1

SHEET TITLE
LPSS DETAILS